

Human Nectin-4 Protein



Cat. No. NEC-HM404

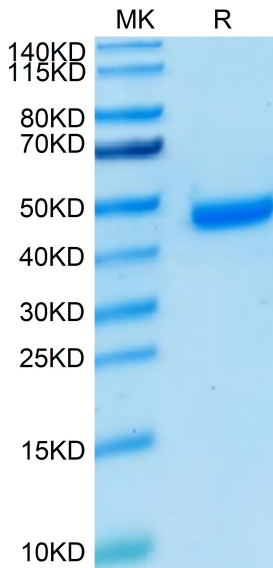
Description	
Source	Recombinant Human Nectin-4 Protein is expressed from HEK293 with His tag and Avi tag at the C-Terminus It contains Gly32-Val351.
Accession	Q96NY8
Molecular Weight	The protein has a predicted MW of 37.2 kDa. Due to glycosylation, the protein migrates to 46-48 kDa based on Bis-Tris PAGE result.
Endotoxin	Less than 1 EU per µg by the LAL method.
Purity	> 95% as determined by Bis-Tris PAGE > 95% as determined by HPLC

Formulation and Storage	
Formulation	Lyophilized from 0.22 µm filtered solution in PBS (pH 7.4). Normally 8% trehalose is added as protectant before lyophilization.
Reconstitution	Dissolve the lyophilized protein in distilled water. Please refer to the Certificate of Analysis for detailed instructions.
Storage	-20 to -80°C for 12 months as supplied from date of receipt.-80°C for 3 months after reconstitution.Recommend to aliquot the protein into smaller quantities for optimal storage. Please minimize freeze-thaw cycles.

Background	
Nectin-4 seems to be involved in cell adhesion through trans-homophilic and -heterophilic interactions, the latter including specifically interactions with NECTIN1. Does not act as receptor for alpha-herpesvirus entry into cells.(Microbial infection) Acts as a receptor for measles virus.	

Assay Data

Bis-Tris PAGE



Human Nectin-4 on Bis-Tris PAGE under reduced condition. The purity is greater than 95%.

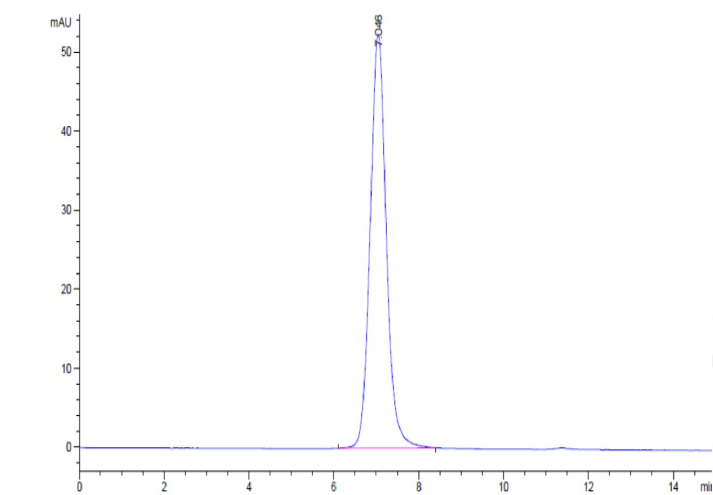
SEC-HPLC

Human Nectin-4 Protein

Cat. No. NEC-HM404



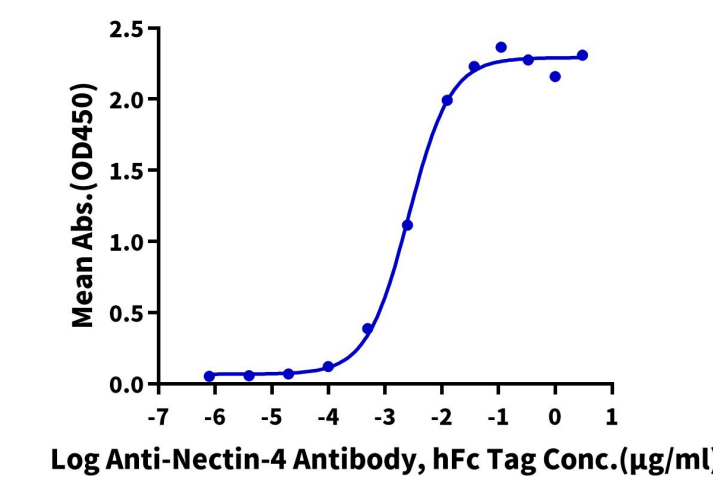
Assay Data



The purity of Human Nectin-4 is greater than 95% as determined by SEC-HPLC.

ELISA Data

Human Nectin-4, His Tag ELISA
0.05µg Human Nectin-4, His Tag Per Well

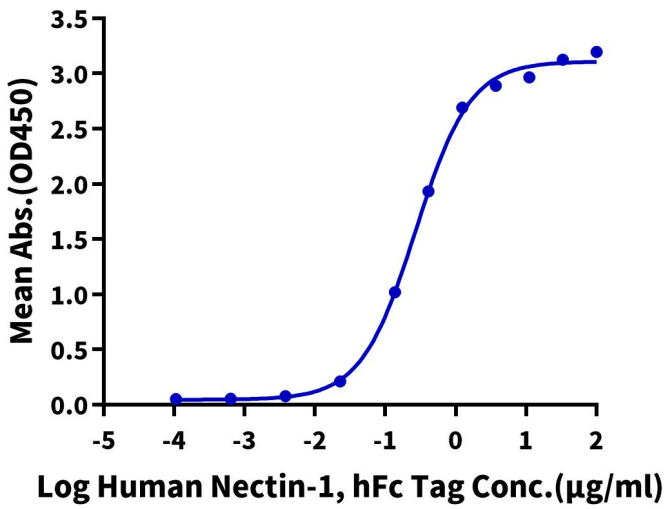


Immobilized Human Nectin-4 at 0.5 µg/ml (100 µl/well) on the plate. Dose response curve for Anti-Nectin-4 Antibody, hFc Tag with the EC50 of 2.6 ng/ml determined by ELISA (QC Test).

ELISA Data

Human Nectin-4, His Tag ELISA

0.2µg Human Nectin-4, His Tag Per Well



Immobilized Human Nectin-4, His Tag at 2 µg/ml (100 µl/well) on the plate. Dose response curve for Human Nectin-1, hFc Tag with the EC50 of 0.27 µg/ml determined by ELISA.